

## The process for developing the CONSERVATION AREA PLAN



Dandenongs to  
Yarra Ranges  
Yellingbo Conservation Area



Environment,  
Land, Water  
and Planning



Healthy Parks  
Healthy People®



TRUST FOR  
NATURE  
*Habitat forever*



Yellingbo Conservation Area Coordinating Committee (YCACC)



Dandenongs to  
Yarra Ranges  
Yellingbo Conservation Area

© The Yellingbo Conservation Area Coordinating Committee (YCACC) 2017



This work is licensed under a [Creative Commons Attribution 4.0 International licence](http://creativecommons.org/licenses/by/4.0/). You are free to re-use the work under that licence, on the condition that you credit the Yellingbo Conservation Area Coordinating Committee as author. The licence does not apply to any images, photographs or branding including, but not confined to, the following images: Yellingbo Conservation Area Coordinating Committee logo; Victorian Coat of Arms; Victorian Government logo; Department of Environment, Land, Water and Planning (DELWP) logo; Parks Victoria (PV) logo; Melbourne Water logo; Yarra Ranges Shire Council logo; Cardinia Shire Council logo; Port Phillip and Westernport Catchment Management Authority (PPWCMA) logo; Zoos Victoria logo; Trust for Nature logo; Country Fire Authority (CFA) logo; Wurundjeri Tribe Land Council logo.

To view a copy of this licence, visit <http://creativecommons.org/licenses/by/4.0/>

**Disclaimer**

This publication may be of assistance to you but the Yellingbo Conservation Area Coordinating Committee and its employees do not guarantee that the publication is without flaw of any kind or is wholly appropriate for your particular purposes and therefore disclaims all liability for any error, loss or other consequence which may arise from you relying on any information in this publication.

Photo - Yellingbo Conservation Area © Anne Langworthy

# Table of Contents

---

|  |            |
|--|------------|
| LIST OF ACRONYMS.....  | II         |
| CONTEXT .....  | II         |
| <b>THE COMMITTEE.....</b>  | <b>III</b> |
| <b>1. INTRODUCTION .....</b>   | <b>1</b>   |
| 1.1 PURPOSE OF THIS DOCUMENT.....                                      | 1          |
| 1.2 WHAT IS THE PLAN? .....  | 1          |
| <b>2. CONTEXT .....</b>  | <b>1</b>   |
| <b>3. PRINCIPLES OF THE PLAN.....</b>                                  | <b>2</b>   |
| <b>4. STEPS TO PREPARING THE PLAN.....</b>                             | <b>3</b>   |
| 4.1 USE THE YCACC AS THE COORDINATING GROUP .....                      | 3          |
| 4.2 REVIEW PLANS THAT CURRENTLY APPLY TO THE AREA.....                 | 4          |
| 4.3 IDENTIFY STAKEHOLDERS AND COMMUNITIES OF INTEREST.....             | 4          |
| 4.4 TARGETED CONSULTATION SESSIONS AND ROUND ONE ENGAGE VICTORIA ..... | 5          |
| 4.5 PREPARE DRAFT PLAN.....  | 6          |
| 4.6 PUBLIC SUBMISSION PROCESS (ROUND TWO OF ENGAGE VICTORIA) .....     | 7          |
| 4.7 REVIEW SUBMISSIONS AND REVISE DRAFT PLAN.....                      | 7          |
| 4.8 SHARE FINDINGS OF COMMUNITY CONSULTATION .....                     | 7          |
| 4.9 PLAN ENDORSED BY YCACC MEMBER ORGANISATIONS.....                   | 8          |
| 4.10 PLAN SUBMITTED FOR APPROVAL OF DELWP AND PV .....                 | 8          |
| 4.11 FINAL PLAN APPROVED AND RELEASED .....                            | 8          |
| 4.12 SUMMARY OF TASKS .....  | 9          |
| <b>5 RESOURCING .....</b>  | <b>10</b>  |
| <b>6 RENAMING OF THE CONSERVATION AREA .....</b>                       | <b>10</b>  |
| <b>7 WHAT IS THE END PRODUCT?.....</b>                                 | <b>10</b>  |
| 7.1 EXAMPLE OF A DRAFT PLAN .....                                      | 11         |
| <b>8 FIRE MANAGEMENT PROCESSES.....</b>                                | <b>13</b>  |
| <b>9 APPROVAL PROCESSES .....</b>                                      | <b>13</b>  |
| <b>YELLINGBO CONSERVATION AREA MAP.....</b>                            | <b>15</b>  |

## List of Acronyms

---

|       |   |
|-------|---|
| CFA   | Country Fire Authority                              |
| DELWP | Department of Environment, Land, Water and Planning |
| PV    | Parks Victoria                                      |
| VEAC  | Victorian Environmental Assessment Council          |
| YCA   | Yellingbo Conservation Area                         |
| YCACC | Yellingbo Conservation Area Coordinating Committee  |

## Context

---

The following document is a planning tool used by the Yellingbo Conservation Area Coordinating Committee (YCACC) and the Yellingbo Conservation Area (YCA) Project Team to help guide the development of the Yellingbo Conservation Area Plan.

## The Committee

---

The Yellingbo Conservation Area Coordinating Committee (YCACC) consists of:

- an independent community representative chairperson;
- community representatives nominated by Yarra Ranges Shire Council and Cardinia Shire Council; and
- representatives from the following agencies:
  - Cardinia Shire Council
  - Department of Environment, Land, Water and Planning
  - Melbourne Water
  - Parks Victoria
  - Port Phillip and Westernport Catchment Management Authority
  - Trust for Nature
  - Yarra Ranges Shire Council
  - Zoos Victoria
  - Country Fire Authority
  - Wurundjeri Tribe Land Council

# 1. Introduction

---

## 1.1 Purpose of this document

This document outlines the process to develop an overarching plan for the Yellingbo Conservation Area (YCA). The proposed YCA Plan (hereinafter referred to as the Plan) is intended to provide further detail about the implementation of the *Victorian Government Response to Victorian Environmental Assessment Council's Yellingbo Investigation Final Report, March 2014*.

## 1.2 What is the Plan?

The Plan will provide the overall direction of how the Conservation Area will be managed in the future. There are many opportunities for the use and purpose of the Conservation Area across the area – the Plan will provide direction on use and management.

Community engagement is an important component of the planning process. Through engaging our stakeholders and communities, the community can be involved in the trade-offs that might be required when determining use of the whole Conservation Area.

# 2. Context

---

In August 2011, the former Minister for Environment and Climate Change requested the Victorian Environmental Assessment Council (VEAC) to investigate public land in the Yellingbo area, focussing on the biodiversity and ecological values, and make recommendations for appropriate management arrangements to conserve and enhance these values.

In July 2013, the Victorian Environmental Assessment Council completed the VEAC Yellingbo Investigation Final Report (VEAC report). A key recommendation is that the public land within the investigation area be reserved as a nature conservation area under the *National Parks Act 1975* to ensure its ongoing protection and enhancement for ecological values. It is also recommended that Parks Victoria be appointed as the delegated land manager for the reserve.

In March 2014, the former Victorian Government responded to the recommendations of the VEAC report and committed to establishing the Conservation Area. The Yellingbo Conservation Area Coordinating Committee (YCACC) has been established to improve coordination and collaboration between land managers and to establish strategic priorities for the area to achieve better environmental outcomes.



In January 2017, the Andrews Labor Government responded to community concern regarding bushfire risk in the north-east corner of the area, including the townships of Yarra Junction, Launching Place, Don Valley, Millgrove and Wesburn. The changes to implementation of the Conservation Area include the following conditions:

- Revegetation in the north-east corner will only occur to a maximum of 10 metres on each side of a waterway, in the streamside areas.
- No revegetation will occur within the north-east corner of the conservation area until the bushfire planning process is complete.
- Riparian management licences will be issued on an individual basis for a maximum ten years to replace grazing licences.
- Prioritising on-ground works to support bushfire and pest management.

The above points are applicable to the north-eastern corner of the Investigation Area (see Map 1).

### 3. Principles of the Plan

---

The preparation of the Plan will be guided by the following principles:

- The Plan is being prepared to implement the Government's response to the VEAC report.
- The Plan will be based on a bushfire management plan that uses best-practice science and local knowledge in designing bushfire risk mitigation measures to ensure that implementation of the Conservation Area does not materially increase the bushfire risk to the community.
- The community will be engaged in the preparation of the Plan to increase the understanding of how the Conservation Area is currently used, and helping to shape its future use.
- The Plan will be used to guide the use and development of the over the next 10 years.
- The Plan will identify the future use and development of individual areas within the Conservation Area.
- The implementation of the Plan will be realistic, within the timeframes and resources available.
- The Plan will acknowledge and support the existing management of public land by volunteer groups and individuals, including adjoining landowners, where consistent with the values of the area.
- The Plan will include areas of community access and recreation.
- The Plan will identify the future land manager of individual areas.

## 4. Steps to preparing the Plan

---

### 4.1 Use the YCACC as the coordinating group

The YCACC will be used as a coordinating group to support the development of the planning process. The role of the YCACC is to:

- refine the engagement planning process to ensure key stakeholders and wider community members are properly engaged;
- agree on key messages to use in community interactions;
- manage the stakeholder database and include new stakeholders as needed;
- determine the best way to engage with community members given the geographic size of the Yellingbo Investigation Area;
- provide assistance relating to rolling out the community engagement process;
- provide advice on key and emergent matters during the development of the Plan.

To assist with governance and management of the development of the Plan, a Planning Working Group has been established. Membership consists of:

- Anne Langworthy (Convener);
- Sue Tardif (Community representative);
- Dan Robertson (Melbourne Water representative);
- Joshua Chikuse (Parks Victoria representative);
- Merryn Kelly (DELWP representative); and
- Victoria Purdue (Project Manager, Yellingbo Conservation Area).

The Working Group will be supported by the Yellingbo Project Team. The Yellingbo Project Team will be responsible for:

- undertaking the review of existing plans;
- preparing material for community engagement (such as background material etc.);
- organising logistics of community consultation;
- notification of community sessions;
- undertaking the Engage Victoria consultation process;
- collating data and analyse feedback;
- preparing the draft Plan; and
- incorporating community feedback and comments and prepare final plan for approval.

The Working Group will be required to report back to the wider YCACC and consider input from the wider group.



## 4.2 Review plans that currently apply to the area

The Government response to the VEAC Yellingbo Investigation Report provides clear recommendations relating to the use of this land. DELWP and other agencies (such as Parks Victoria and Melbourne Water) may have other plans which are relevant to the area (such as *Protecting Victoria's Environment – Biodiversity 2037*) that are applicable and provide policy and legislative direction to the Plan.

In addition to the existing plans, there are currently two projects underway that will influence the contents of the Plan. These are the Haining Farm redevelopment and the bushfire management planning process for the Conservation Area.

**Output:** DEWLP to develop and document:

- a summary of existing planning documents and key directions for management that can be used in the Plan;
- a scope of the Plan agreed by the Planning Working Group. This is essential so that the process can be directed to deliver the required output. This would be aided by identifying / mapping the changes in reserve status set out in the VEAC report. This will clarify the changes to current land use / activities for various areas and prepare the project team for where issues are likely to arise. It should also assist in a logical break-up of planning units to make sense of the planning area;
- a map of existing values in the area, including conservation, recreation, cultural heritage and economic values; and
- the mechanisms (e.g. set asides) that regulate activities and uses / and the regulations that apply under the *National Parks Act 1975* are documented. This will inform the planning as to what are allowable uses and how potential changes can be put forward as ideas in the plan.

## 4.3 Identify stakeholders and communities of interest

As part of the YCACC engagement process, stakeholders will be identified. Based on their level of interest, stakeholders will be grouped. A range of community engagement techniques will be used depending on what group they fall into.

**Output:** YCACC stakeholder database.

**Output:** One-page summary of the planning process to go with invitations to key stakeholders.

## 4.4 Targeted consultation sessions and round one Engage Victoria

As part of the consultation process, targeted sessions with key stakeholders will occur.

The YCACC will facilitate a series of meetings/workshops with key stakeholders to share information on the values of the area, and to discuss the best way to engage the wider community.

The purpose of the meetings would be to:

- incorporate the views and knowledge of key stakeholders into the preparation of the Plan;
- discuss the best way to engage with the wider community;
- build a collective understanding and share local information regarding the Conservation Area;
- confirm values for different areas to guide the type and scale of use in different areas across the Conservation Area;
- identify the existing threats to the identified values;
- identify opportunities to improve/add value to Conservation Area; and
- discuss potential uses of the Conservation Area across the whole region and get advice from the community relating to potential trade-offs

The meeting can be used to confirm the principles for management as well as the existing values within the reserve. Existing values that should be considered and mapped include:

- biodiversity values;
- threatened flora and fauna values;
- cultural heritage values;
- recreation uses;
- economic and social values;
- utilities and infrastructure;
- adjoining landowners involved in management;
- community groups operating in or alongside the Conservation Area;
- productive use of the land;
- access to rivers and streams; and
- access to water.

In addition to values, it's important to understand the issues or threats that potentially could affect the Conservation Area, and look at many opportunities (both short and long term) to increase the values within the reserve. Issues that should be considered include:

- increasing populations of pest animals;
- weed species;
- lack of weed and pest animal management in some areas;
- lack of access for the public, fire response vehicles and maintenance vehicles;
- long term grazing;
- encroachments by adjoining land owners;

- limited direct knowledge of some areas within Conservation Area, and resultant perception issues of their values; and
- expressed concerns of trust between land managers and community members.

Feedback from these meeting will be used to inform the draft Plan. Feedback will be identified spatially.

The meeting will also be used as a focus group to discuss and determine the best way to engage the wider community, both within the Yellingbo Investigation Area, as well as the wider community outside this area.

As well as the targeted sessions, an on-line engagement process will also run. This will involve opening Engage Victoria for a period of 4 weeks and encouraging the general public to provide input into the development of the plan. The Engage Victoria site will include a questionnaire that people can fill out to help develop the draft plan. The questionnaire will include questions on the values and the issues within the investigation area. The Conservation Area is a state asset located within a major Victorian tourism and agricultural region. As such, input will be sought from all Victorians through Engage Victoria, as well as notifying local groups of the questionnaire. YCACC stakeholder database and the YCACC website will be used to notify groups and the wider community of the questionnaire.

**Output:** Spatially identify the areas within the Conservation Area where the management aims are clear and not negotiable based on the Government response and the existing plans.

**Output:** Map identified existing values within the Conservation Area.

**Output:** Preparation of a booklet outlining key themes and maps for the area.

**Output:** Develop a community wide consultation process.

**Output:** Engagement process on Engage Victoria website.

## 4.5 Prepare Draft Plan

Using the output from steps 4.2 and 4.4 (existing planning information, the targeted meetings, and the Engage Victoria website), develop the draft Plan. The Plan should provide enough detail to broadly identify key areas of management and key uses within the Conservation Area.

**Output:** Draft Plan

## 4.6 Public Submission Process (round two of Engage Victoria)

The local and wider community will have the opportunity to review the draft plan and provide feedback. Using our communication tools, the community will be notified of the draft Plan and the ability to provide submissions on the draft.

Engage Victoria will be used to facilitate the public submission process. It will allow the public and stakeholders to provide formal input into the draft Plan via an on-line submission process, or by providing a written submission. The community will be made aware of the process via:

- direct notification of key stakeholders, including adjacent landholders and interest groups;
- leaflets and newspaper advertising in local papers to advise the wider community;
- notification on key websites (such as Engage Victoria and the YCACC website); and
- notification in relevant agencies e -newsletters and/or targeted distribution lists.

Round two of Engage Victoria will be open for 6 weeks

**Output:** Engagement process on Engage Victoria website.

**Output:** Plan circulated with information on how the community can provide comments – either through online submissions, or via hard copy templates for written responses.

## 4.7 Review submissions and revise draft Plan

Based on input from the community, update the Plan.

**Output:** Plan updated and revised based on input from the submissions.

## 4.8 Share findings of community consultation

The Yellingbo Project Team will prepare an assessment of the community consultation, summarising the key themes of submissions and how they have been considered in the development of the Plan. Disseminate the report via the YCACC webpage and to interested stakeholders.

**Output:** Report on key themes of submissions and how they have been considered in the Plan.

## 4.9 Plan endorsed by YCACC member organisations

As per the approval section on page 10, the land managers are required to approve the plan. However, it is important that other agencies members of YCACC endorse the proposed plan to ensure their respective agencies are in agreement with the final plan.

**Output:** Final draft plan endorsed by YCACC

## 4.10 Plan submitted for approval of DELWP and PV

The final plan is submitted for approval as per the process outlined in section 8 of the document. It will be critical that both Parks Victoria (PV) and the Department of Environment, Land, Water and Planning (DELWP)—as the final land managers—provide formal approval, with endorsement by other agencies as necessary.

Parks Victoria (PV) as the future land manager of the Conservation Area, will be involved in the Planning Working Group and will be required to be involved in the preparation of the Plan at all stages.

PV will be required to sign off on the final Plan as they will be the future land manager of Conservation Area. The implementation of the Plan needs to link to any budget bids (or similar) for the land assignment and on-going management requirements.

Once DELWP and PV formally endorse the plan, approval to realise the final place is sought by the Minister for Energy, Environment and Climate Change.

## 4.11 Final Plan approved and released

**Output:** Final Plan released to the public via the YCACC webpage and to interested stakeholders and used in future management.

## 4.12 Summary of tasks

The above sections are summaries in the following table:

| Task   | Responsibility  | Timeframe   |
|--|---|---|
| 4.1 – The YCACC act as a coordinating group                        | YCACC   | July 2017   |
| 4.2 - Review plans that currently apply to the area                | Yellingbo Project Team, in consultation with YCACC                        | August 2017   |
| 4.3 – Identify stakeholders and communities of interest            | YCACC   | July 2017   |
| 4.4 – Targeted consultation sessions and round one Engage Victoria | Led by YCACC  | Targeted meetings - September/October 2017<br>Engage Victoria – November 2017 |
| 4.5 - Prepare draft Plan   | Yellingbo Project Team, in consultation with YCACC                        | December 2017/February 2018   |
| 4.6 – Public Submission Process (round two of Engage Victoria)     | DELWP   | March/April 2018  |
| 4.7 - Review submissions and revise Plan                           | Yellingbo Project Team in conjunction with YCACC                          | May 2018  |
| 4.8 - Share findings of community consultation                     | Yellingbo Project Team in conjunction with YCACC                          | May 2018  |
| 4.9 – Endorsement by YCACC   | Each agency in YCACC  | May 2018  |
| 4.10 - Plan submitted for approval as per approval process         | Yellingbo Project Team, in consultation with YCACC                        | May 2018  |
| 4.11 - Final plan approved and released.                           | PV and DELWP with the Minister for Energy, Environment and Climate Change | June 2018   |

Note that regular reporting to and updating of the key land managers (DELWP and PV) will be required throughout this process.

## 5 Resourcing

---

DELWP will provide financial support and project support to assist YCACC in the development of the planning process via the Yellingbo Project Team.

## 6 Renaming of the Conservation Area

---

There is an opportunity to rename the Yellingbo Conservation Area during the development of this plan.

Feedback from the community has been that the name “Yellingbo” does not reflect the wide geographic nature of the conservation area, and is misleading as some people believed it was referring to the Yellingbo Nature Conservation Reserve.

Through the development of this plan reserve will be renamed. Details relating to the renaming process will be made available on the Engage Victoria website, and during the wider community consultation process.

## 7 What is the end product?

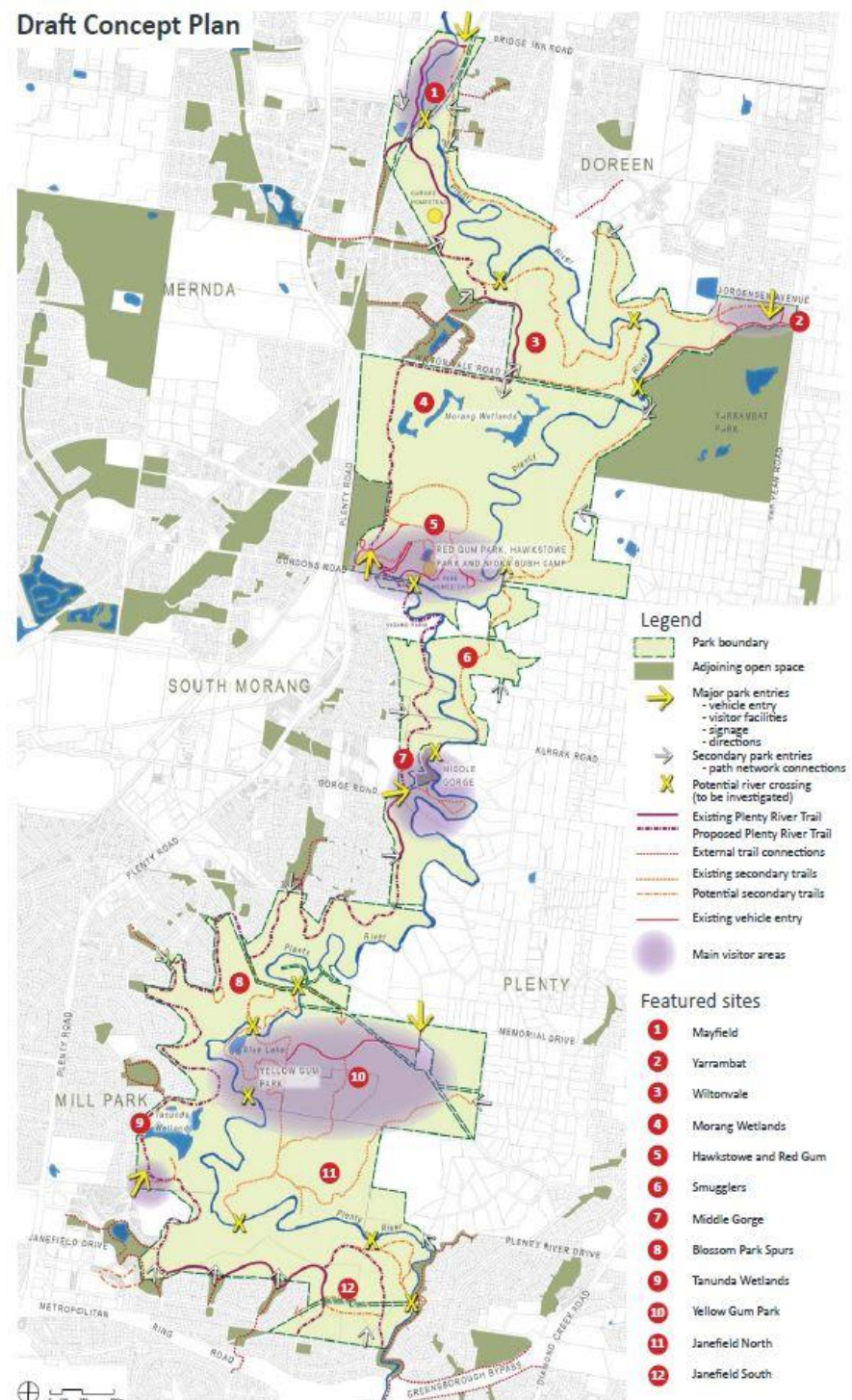
---

The Plan will cover the following scope and content:

- Guiding Principles for Management.
- Vision for the Conservation Area.
- Zoned map of the Conservation Area identifying key features, extent of uses, where uses are changing.
- Identification of areas reserved for specific uses – for example, areas that have been identified conservation purposes or recreation purposes.
- Implementation priorities and staging – set out using PV program structure – refer example below. (Note funding requirements can be kept internal to PV/DELWP as future resourcing will need to go through budget process).



## 7.1 Example of a Draft Plan



|  |
|--|
| <p><b>Program - Fire and Emergency</b></p> <p><b>Activity examples:</b> Bushfire Prevention / Fuel Management - Planned Burning / cross land tenure fuel management outcomes with park neighbours and communities</p>  |
| <p><b>Program - Park Services</b></p> <p><b>Activity examples:</b> Ranger presence / access to visitor sites and facilities / asset management / Enforcement</p>   |
| <p><b>Program - Managing Country Together</b></p> <p><b>Activity examples:</b> Aboriginal connection to Country / cultural heritage management, protection and conservation</p>  |
| <p><b>Program - Science and Management Effectiveness</b></p> <p><b>Activity examples:</b> Threatened species and ecosystems science / Research into status/condition of threatened species and ecosystems / monitoring and research into threatening processes, impacts on species and ecosystems</p>  |
| <p><b>Program - Environment</b></p> <p><b>Activity examples:</b> Habitat Management / ecological character of priority habitats is protected / water quality, yield and catchment resilience improved / optimising water regimes and reducing catchment degradation.</p> <p><b>Activity examples:</b> Catchment management / Partner with CMAs, local government and others to deliver integrated on-ground catchment management actions / Licence and Landowner agreements / revegetation – fencing – streamside protection</p> <p><b>Activity examples:</b> Invasive species / asset protection, containment or eradication objectives / protection of priority assets / high risk weed and invasive animal populations / Prevent new and emerging invasive species from establishing in parks</p> <p><b>Activity examples:</b> Over abundant native animal management / high priority large herbivore management / prevent establishment of new populations of invasive animals or expansion of range where feasible / manage over-abundant native animal populations</p> <p><b>Activity examples:</b> Threatened Species / maintain or improve the status of threatened species and communities / protect or restore nationally critically endangered or endangered flora and fauna / recovery plan implementation and missing species restoration projects.</p> |
| <p><b>Program - Partnerships and experiences</b></p> <p><b>Activity examples:</b> Education and interpretation / Enhance visitors' and students' enjoyment, understanding and advocacy of park environments and experiences</p> <p><b>Activity examples:</b> Volunteering in Nature / mutual benefits of volunteering to meet park goals and improve the health and wellbeing of volunteers</p>  |
| <p><b>Program - Asset Renewal and Creation</b></p> <p><b>Activity examples:</b> Plan, develop and implement sustainable asset management programs that</p>   |

|  |
|--|
| support priority services and manage organisational risk / manage assets to ensure staff and public safety is not compromised. |
|--|

|                   |
|-------------------|
| Other as required |
|-------------------|

## 8 Fire Management Processes

A bushfire risk assessment and a bushfire management plan will be developed through a process led by the local community, with involvement from DELWP, CFA, Parks Victoria, and Council; and supported by an independent facilitator and scientific experts. This will be the first step in implementing the Conservation Area, and the plan will consider all risk factors and recommend actions to ensure bushfire risk in the Conservation Area is managed effectively.

This process will occur slightly ahead of the development of the Plan to be able to feed into it.

DELWP will continue to implement a range of bushfire mitigation activities in the area including:

- Fuel reduction burning and other fuel management activities in key areas in and around the broader Yellingbo Investigation Area. This has taken place over many years.
- Fire access track maintenance and improvement within the Yellingbo Investigation Area.
- Safer Together, a whole-of-Victorian Government policy that combines strong community partnerships with the latest science and information to more effectively target our actions to reduce bushfire risk.
- Collaborating with communities and agencies, including the CFA, to develop township fire plans which examine options to manage bushfire risk on both public and private land.

## 9 Approval Processes

As part of the development of the Plan, the key land managers need to be involved in its preparation. In the Conservation Area, the majority of the land is managed by DELWP and PV.

While the land managers are required to approve the plan, other agencies members of YCACC need to endorse the proposed plan to ensure their respective agencies are in agreement with the final plan.

The land managers will oversee the strategic delivery of the Plan including the development of, and monitor the delivery of, project plans, and project resourcing. They would also oversee the integration of the Plan development with other planning processes (such as Haining Farm precinct planning), the other activities of the YCACC, and resolution of operational policy positions.

Representatives of the key land managers who are responsible for coordinating their Department/agency's input and endorsement of the Plan are:

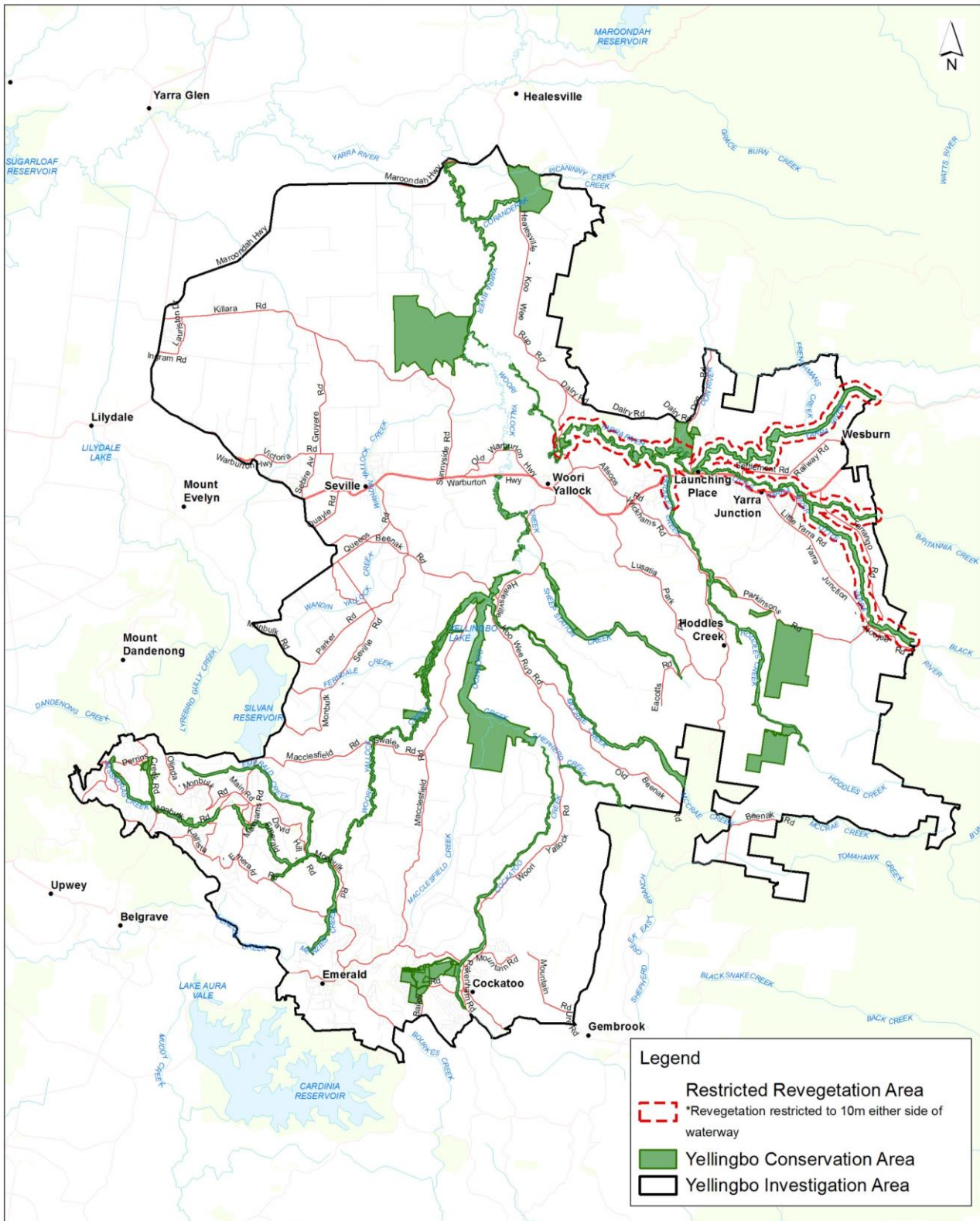
- Regional Director Port Phillip, DELWP; and the
- Executive Director Melbourne, Parks Victoria.

Steps for the approval process are as follows:

- Development of the Plan;
- Endorsement by all agencies represented in YCACC;
- Department / agency review followed by endorsement via Regional Director Port Phillip, DELWP and Executive Director Melbourne, Parks Victoria; and
- Approval to release the draft and final plan is via the Minister for Energy, Environment and Climate Change.



# Yellingbo Conservation Area Map



**Disclaimer**  
This publication may be of assistance to you but the State of Victoria and its employees do not guarantee that the publication is without flaw of any kind or is wholly appropriate for your particular purpose and therefore disclaims all liability for any error, loss or other consequence which may arise from you relying on any information in this publication.

**Accessibility**  
If you would like to receive this publication in an accessible format such as large print or black and white please telephone 136 186, or email [customer.service@delwp.vic.gov.au](mailto:customer.service@delwp.vic.gov.au). Deaf, hearing impaired or speech impaired? Call us via the National Relay Service on 133 677 or visit [www.relayservice.com.au](http://www.relayservice.com.au)

Map produced by PPR GIS September 2017  
Spatial data is sourced from the Victorian Spatial Data Library.  
Copyright © The State of Victoria,  
Department of Environment, Land, Water and Planning, 2017



Environment,  
Land, Water  
and Planning